

# ROTHENBERGER

SUPERTRONIC 2-3-4 SE

## SUPERTRONIC 2-3-4 SE



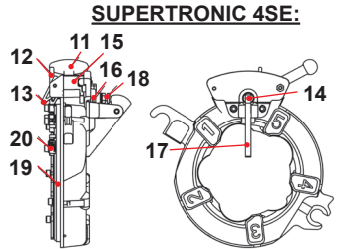
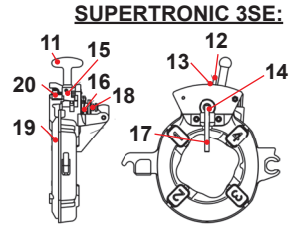
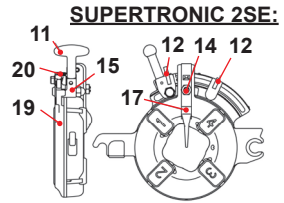
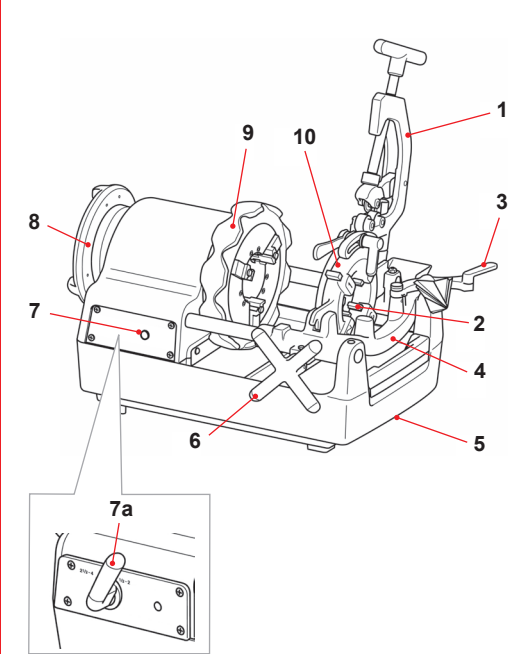
DE Bedienungsanleitung  
EN Instructions for use  
FR Instruction d'utilisation  
ES Instrucciones de uso  
IT Istruzioni d'uso  
NL Gebruiksaanwijzing  
PT Instruções de serviço  
DA Brugsanvisning  
SV Bruksanvisning

NO Bruksanvisning  
FI Käyttöohje  
PL Instrukcja obsługi  
CZ Návod k používání  
TR Kullanım kılavuzu  
HU Kezelési útmutató  
EL Οδηγίες χρήσεως  
RU Инструкция по использованию

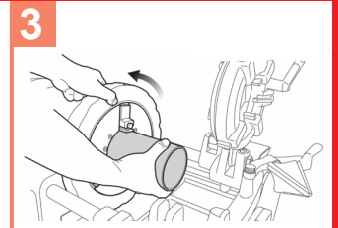
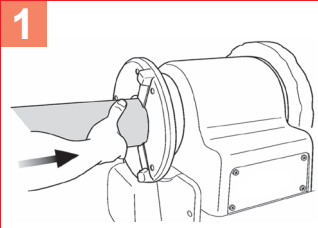


[www.rothenberger.com](http://www.rothenberger.com)

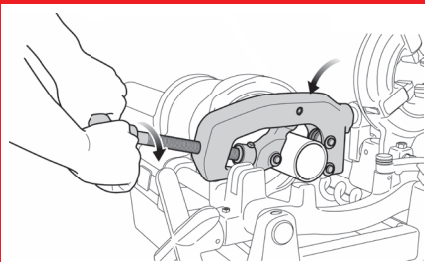
# A Overview



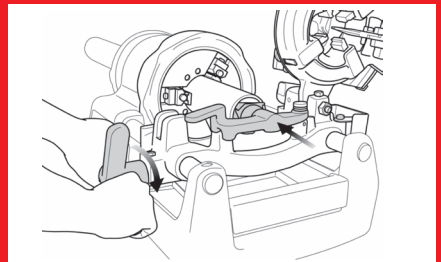
# B Clamping



# C Cutting



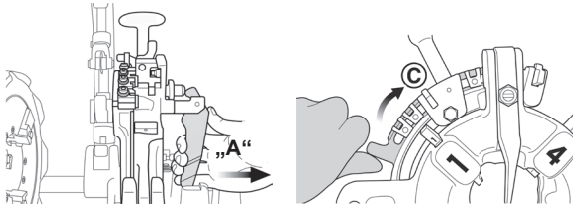
# D Reaming



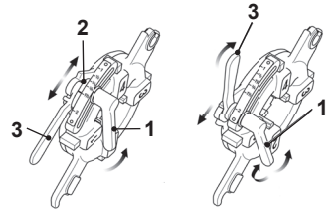
# Remove and installing thread jaws

E

AUTOMATIC - DIE HEAD



STANDARD - DIE HEAD

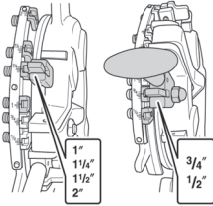


# Changing thread size

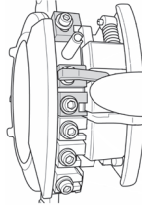
F

AUTOMATIC - DIE HEAD

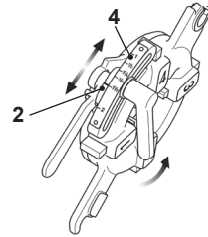
1/2" - 2"



2 1/2" - 4"



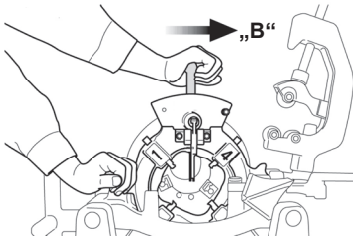
STANDARD - DIE HEAD



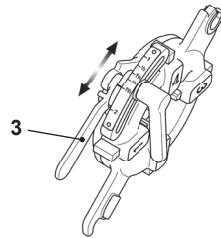
# Threading

G

AUTOMATIC - DIE HEAD



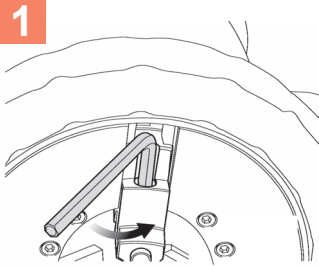
STANDARD - DIE HEAD



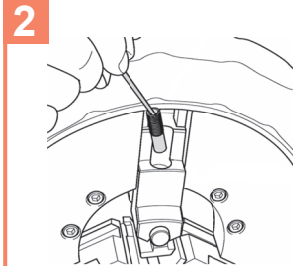
# Changing clamping jaws

H

1



2



3

